

## Teckenförklaring

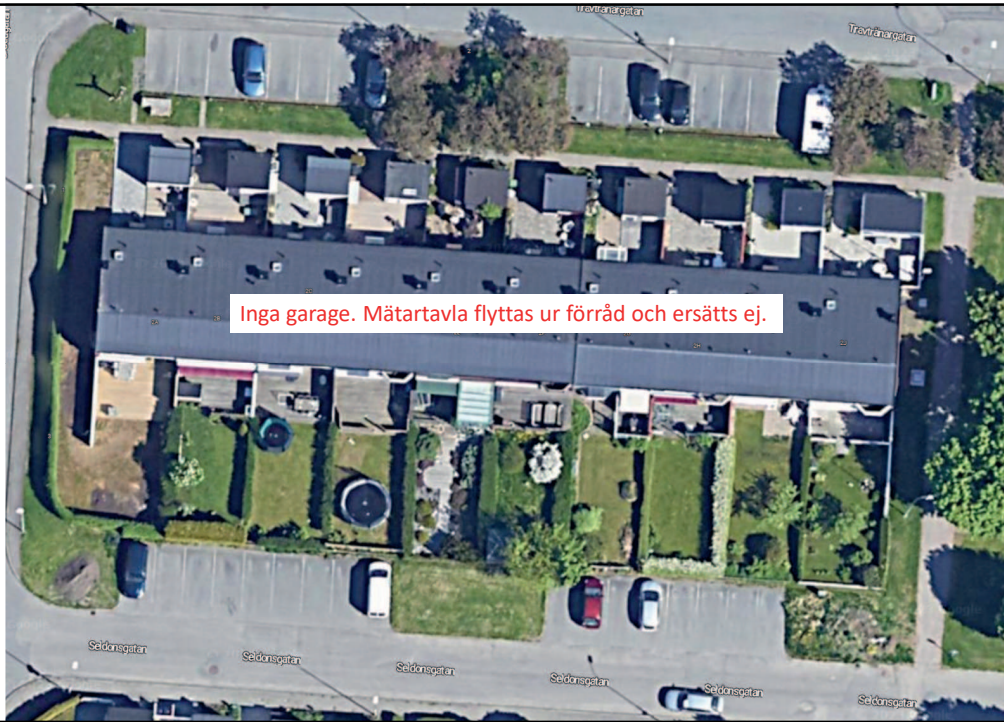
- Markskåp
- Schakt
- Rör med kabel ⊗
- 1 servis 1S
- 1 lågspänningskabel 1L
- Kabel
- Stolpe •

1



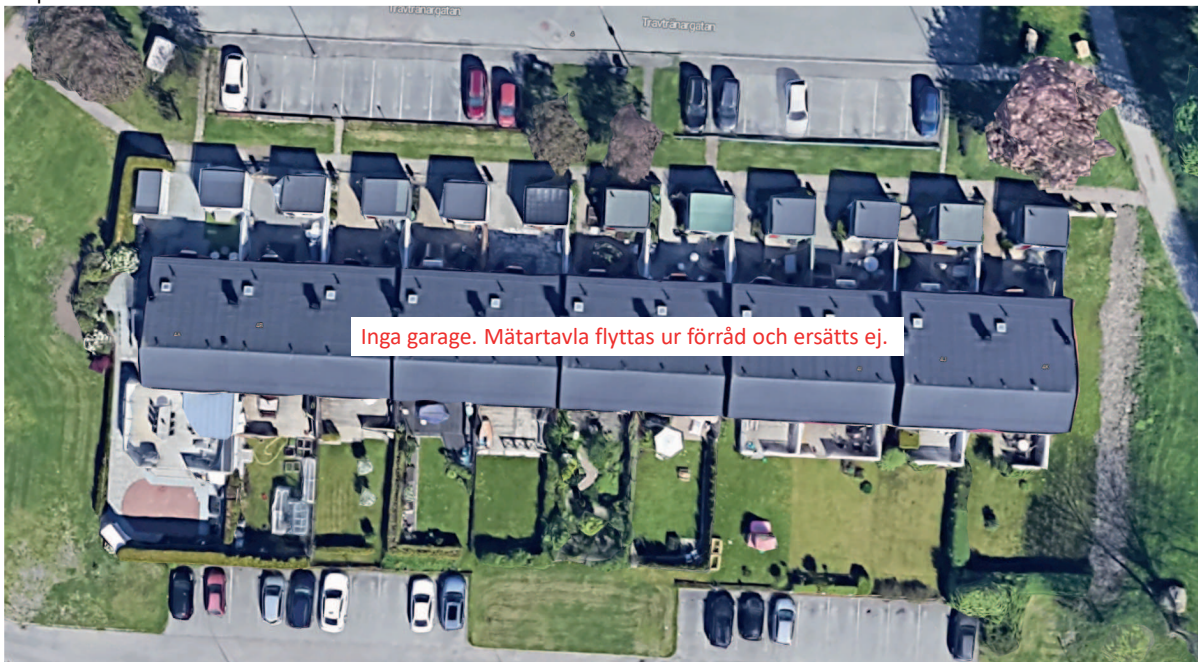
2

1. Seldonet

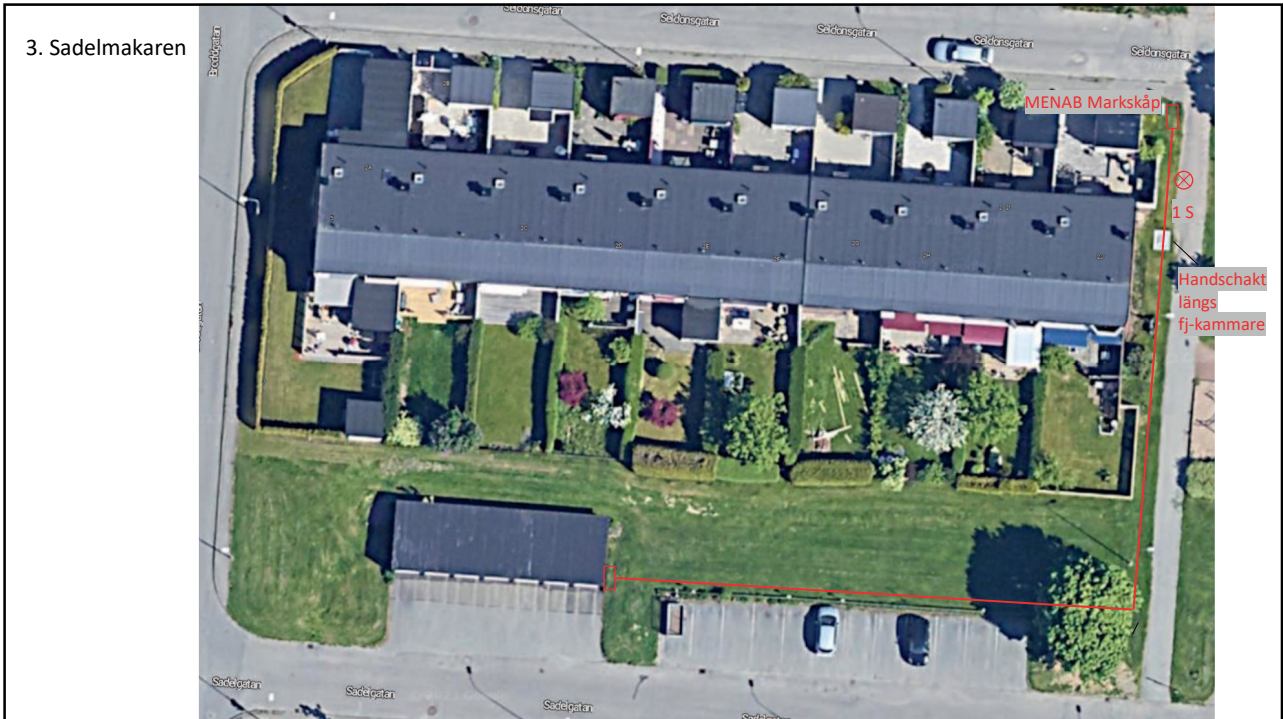


3

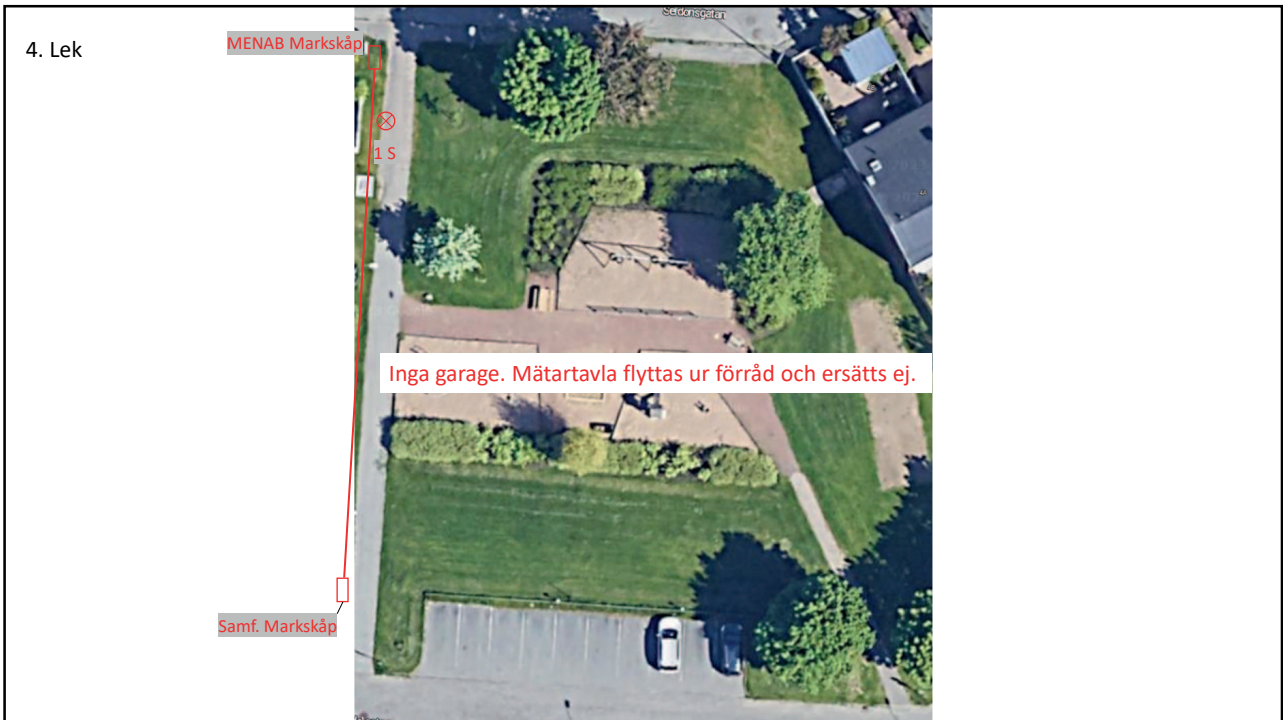
2. Selpinnen



4



5



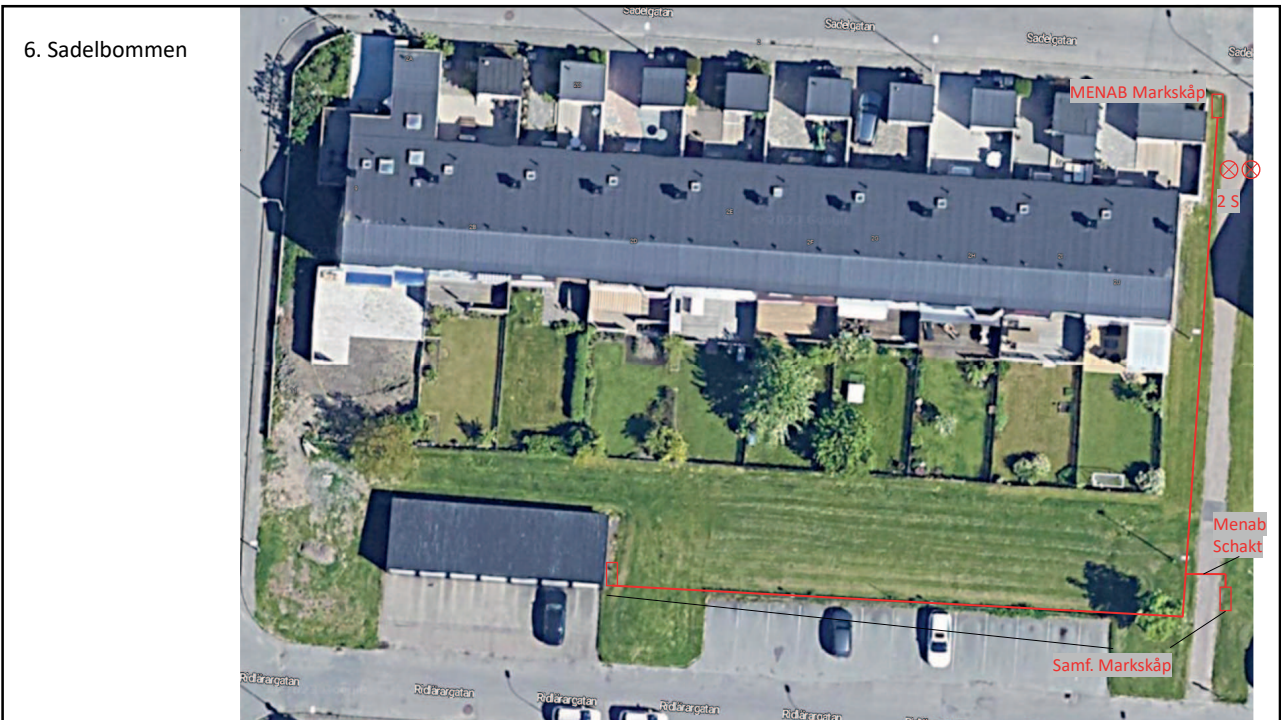
6

5. Sadelplatsen



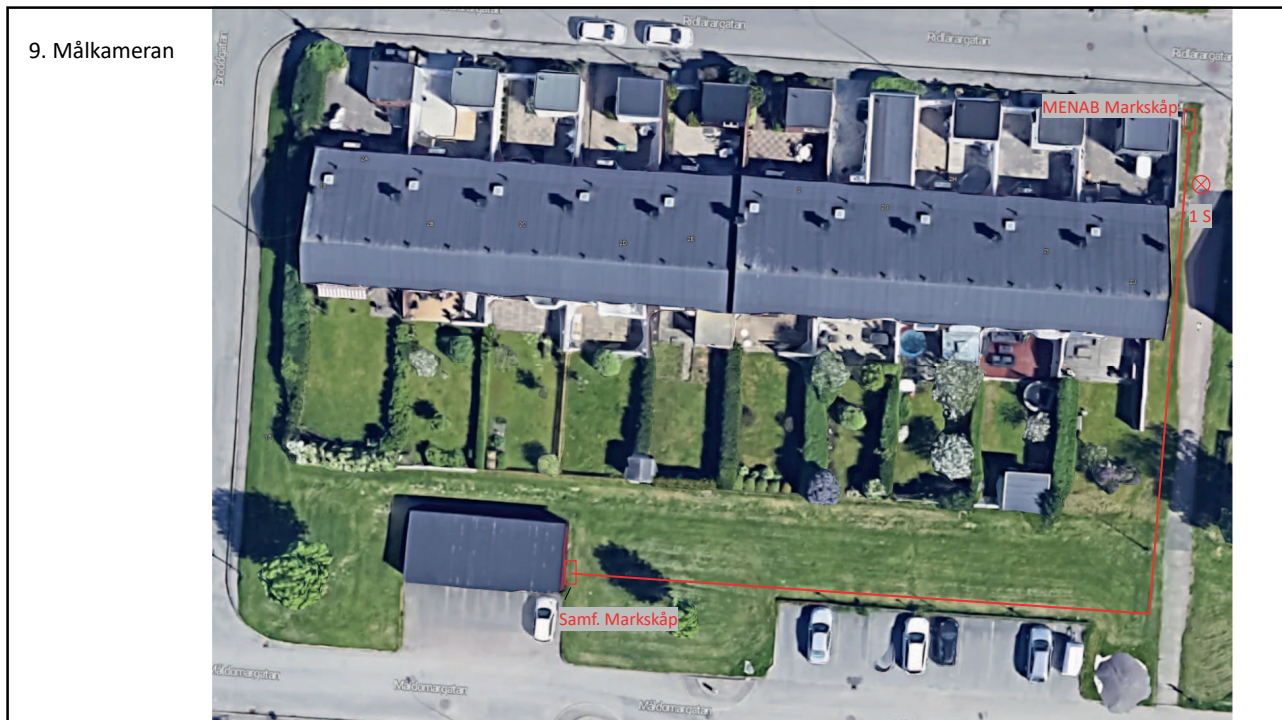
7

6. Sadelbommen

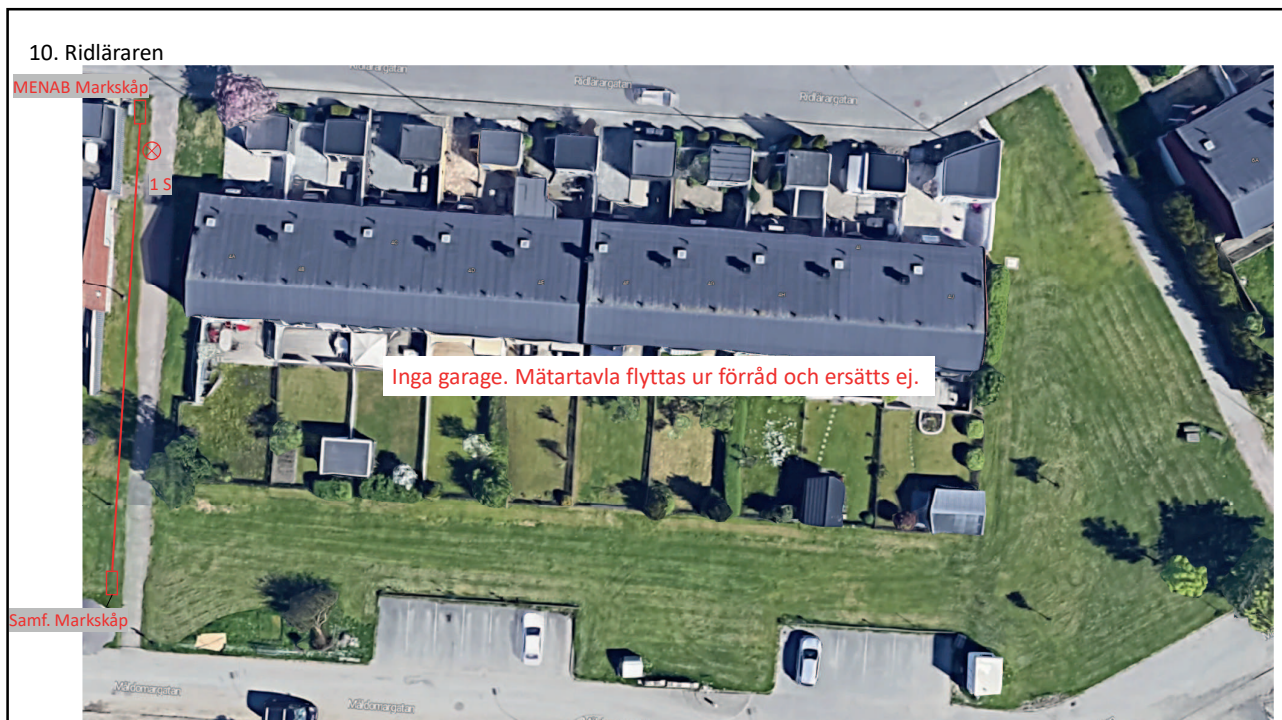


8





11



12

11. Ridpiskan



13