

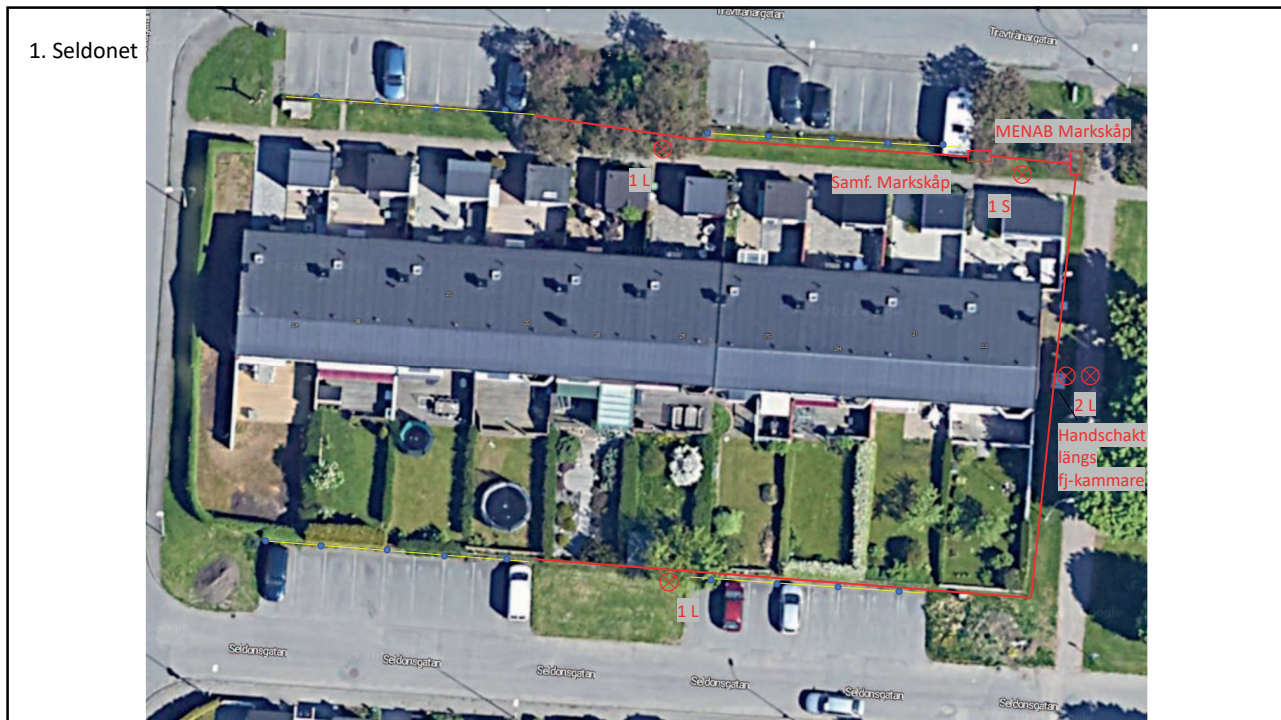
Teckenförklaring

- Markskåp
- Schakt
- Rör med kabel ⊗
- 1 servis 1S
- 1 lågspänningskabel 1L
- Kabel
- Stolpe •

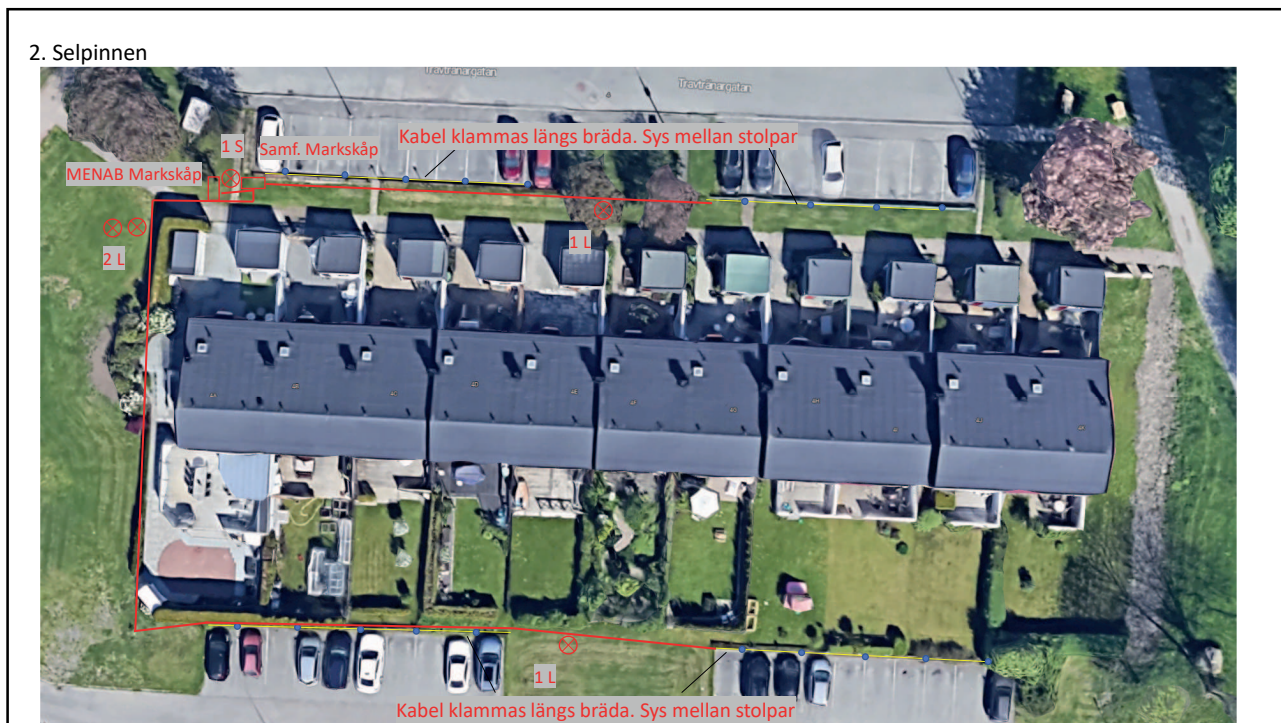
1



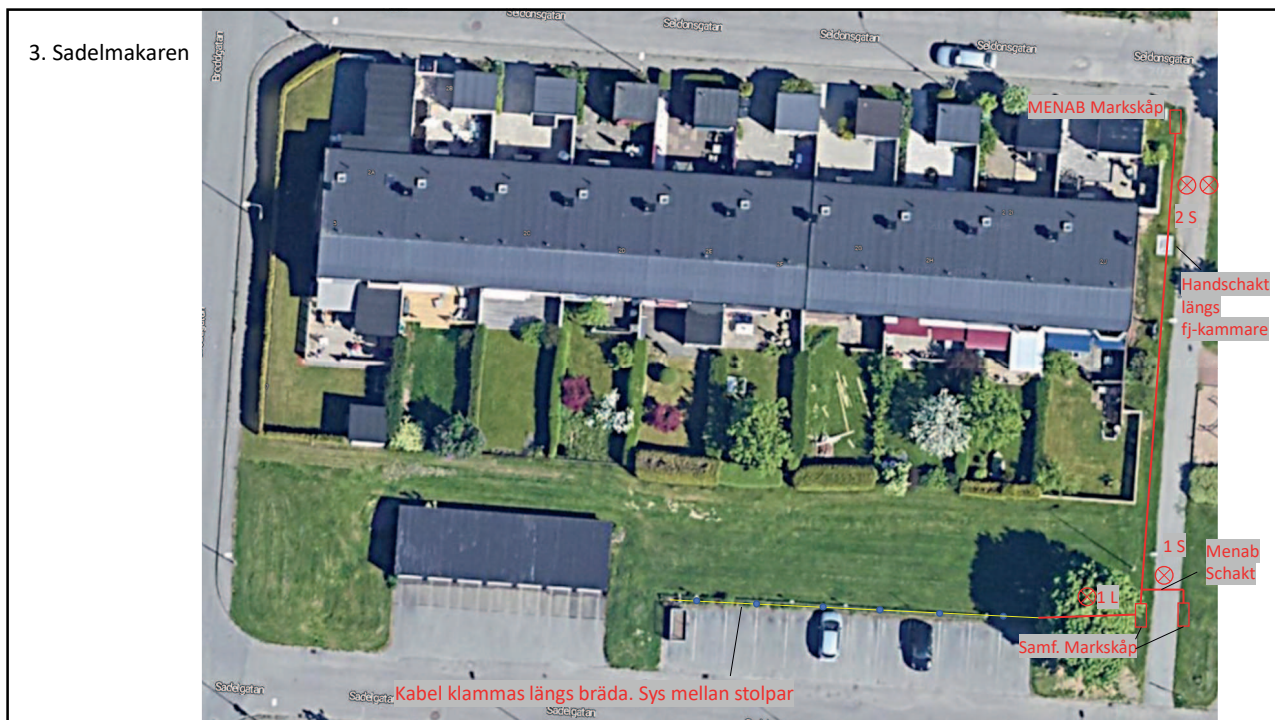
2



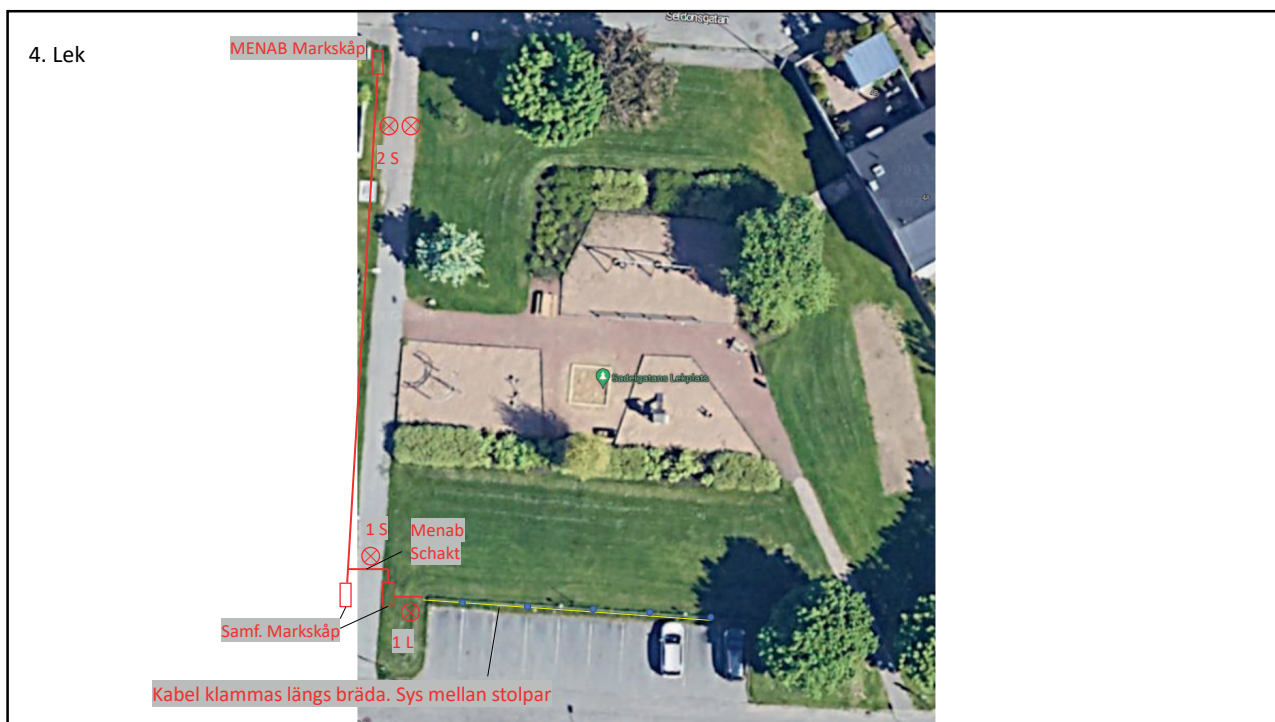
3



4



5



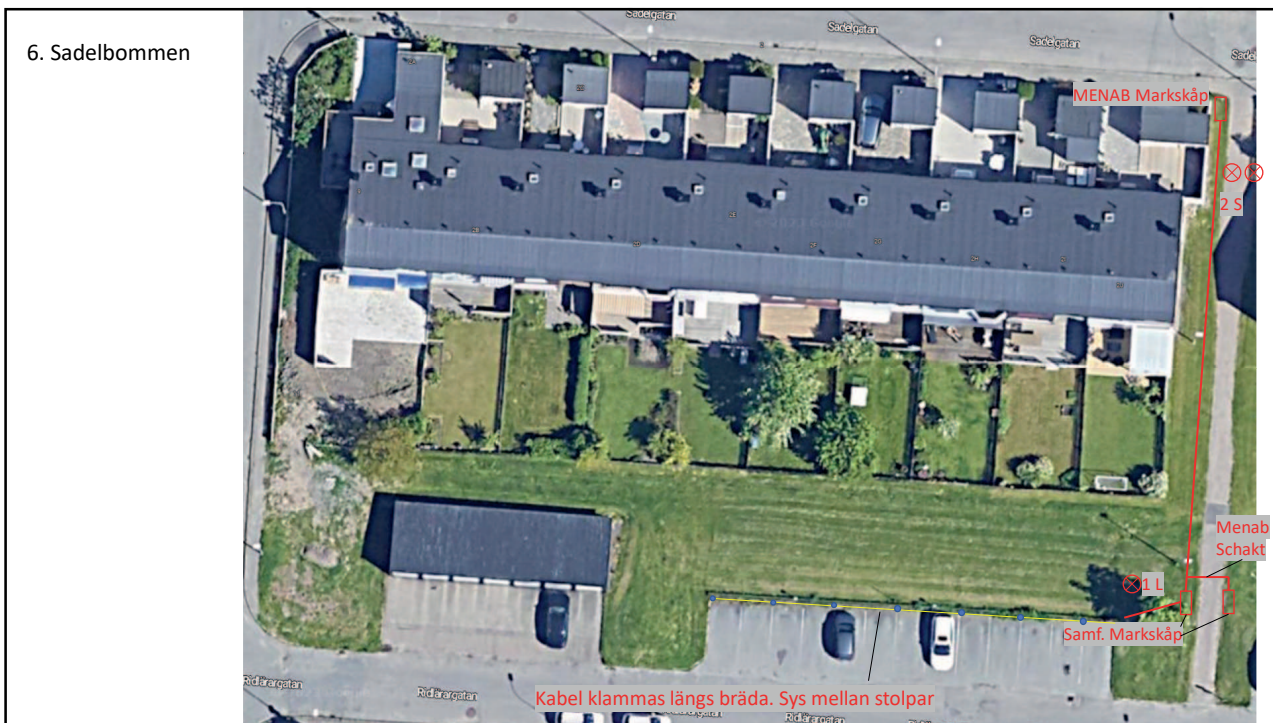
6

5. Sadelplatsen

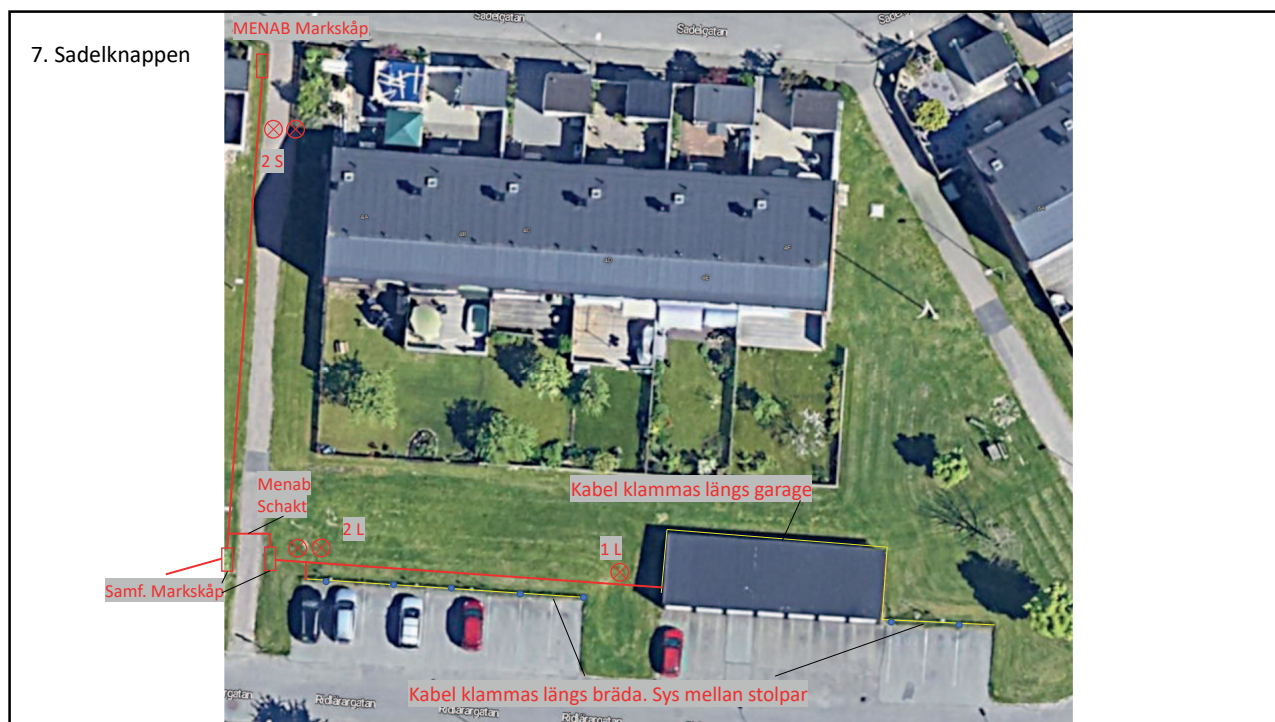


7

6. Sadelbommen



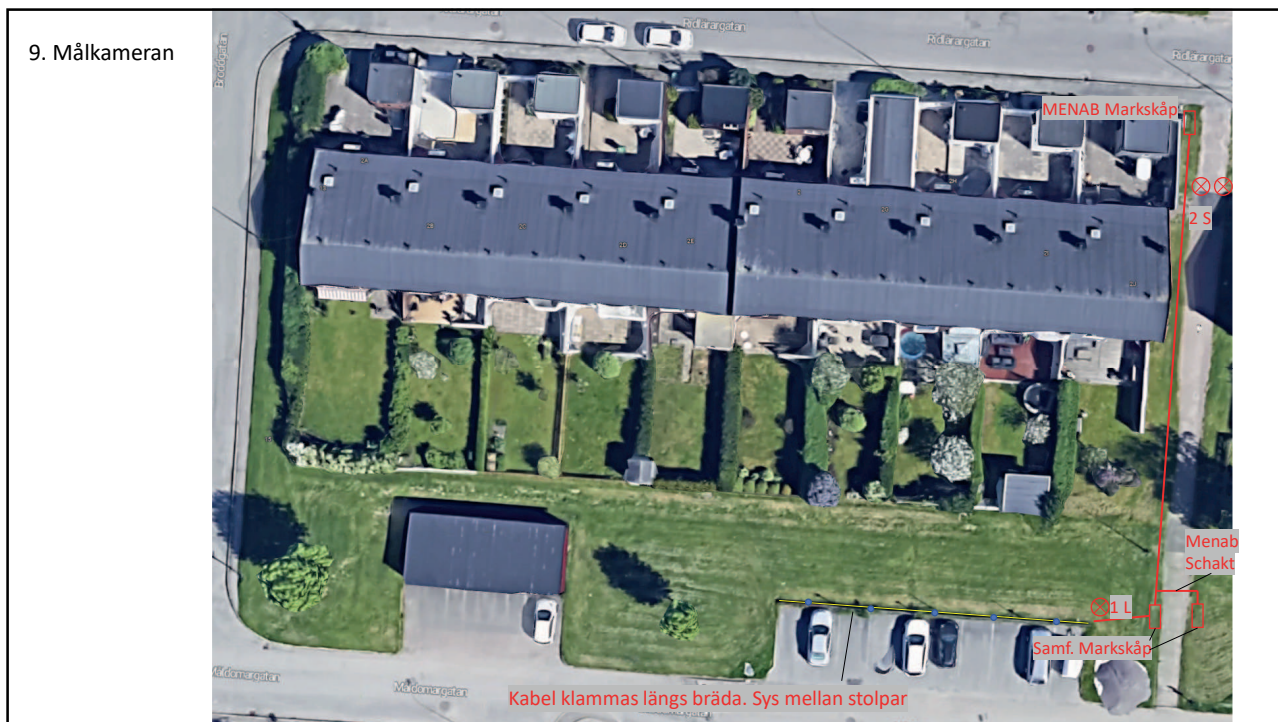
8



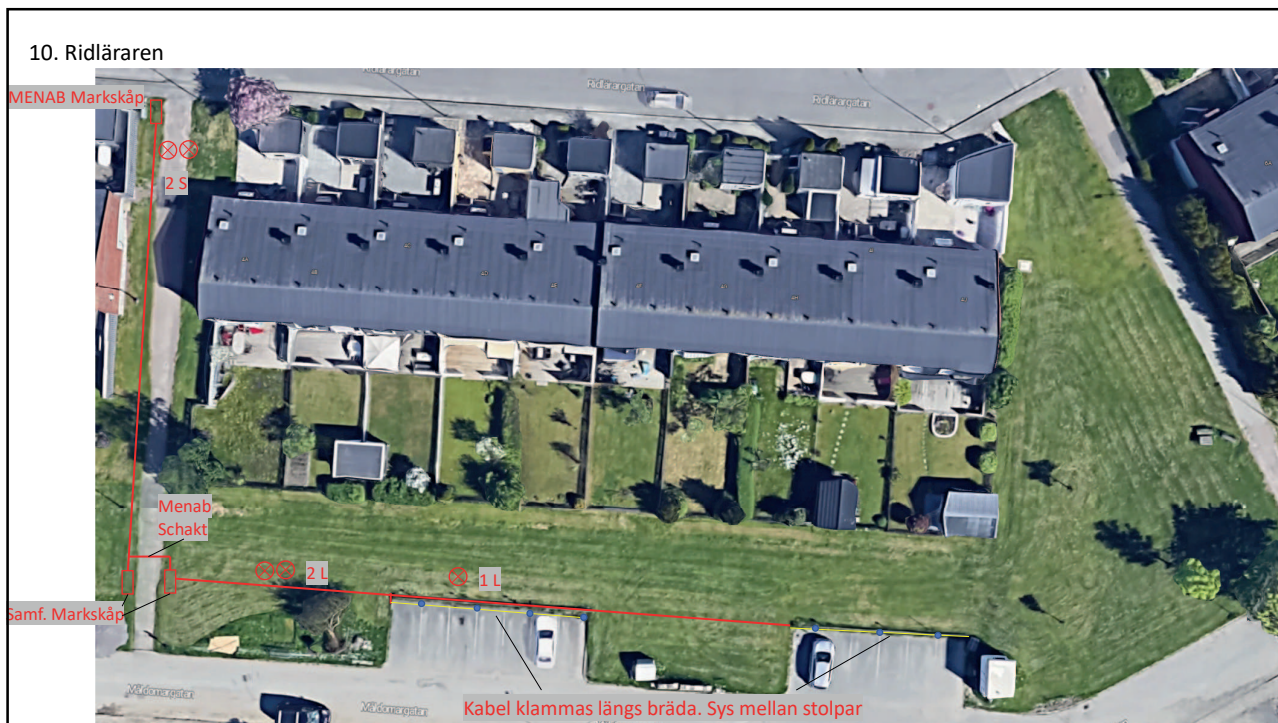
9



10



11



12

11. Ridpiskan

